

# 990 NEWS

...

**November-December 2015  
January 2016**

...

**American Association  
of  
University Women  
St. Paul Branch**





**American Association  
of  
University Women  
St. Paul Branch**

**National Association:**

website: <http://www.aauw.org>  
email: [info@aauw.org](mailto:info@aauw.org)

**Minnesota AAUW:**

website: <http://aauw-mn.aauw.net>

**St. Paul Branch AAUW:**

website: <http://www.aauwstpaul.org>  
Branch voicemail for general information:  
651-602-9839

Business Office Staff (Brian Quist):  
651-227-4477

AAUW advances equity for women and girls through  
advocacy, education, and research.

– *Mission Statement*

AAUW will be a powerful advocate and visible leader in  
equity and education through research, philanthropy, and  
measurable change in critical areas impacting the lives of  
women and girls.

– *Vision Statement*

By joining AAUW, we belong to a community that breaks  
through educational and economic barriers so that wom-  
en have a fair chance.

– *Promise Statement*

**990 News  
November-December 2015 —  
January 2016**

Table of Contents .....	1
Meal Reservations .....	2
From the President.....	3
Calendar-at-a-Glance .....	4-5
Membership News .....	6
Calendar Details .....	7-26
Property/House News .....	27
Branch News .....	28
Branch Perks .....	29
Charitable Contributions .....	30



## MEAL RESERVATIONS

*Email reservations/cancellations preferred*  
**reservations@stpaulcollegeclub.com**

We are happy to offer a wonderful luncheon to our members with a prior reservation for the first 140 reservations.

### Luncheon Cost . . . \$15

Beginning January 1, the lunch price will be \$18 and evening meeting meals will be \$20. This change is due to substantial increases in costs and because of the large subsidy paid by the Business for Branch meals.

Meal prices include a 12 percent tip.

Please make checks payable to: **St. Paul-AAUW**

- Please **RESERVE** via email **by noon on the preceding Friday** and receive an instant confirmation. You may also **CANCEL** your lunch reservation via email **until 9:00 on Tuesday morning**. Include your name, email, date, event, and guests you have made reservations for. You are expected to pay for your reservations.
- If you do not receive a confirming email or are unable to email, you may call 651-227-5885.
- One alternative meal is available: gluten free vegetarian. Please include this request in your reservation and identify yourself to the server at the meal.
- If you will be attending often, you may request to be put on the permanent luncheon list.
- Special Event Reservations are made separately and with deadlines as specified.

### Dinner Programs:

- The reservation and cancellation deadline for dinner events is by noon on Friday preceding the event.
- Evening Dinner Cost: \$17
- Include the same information as for a weekly luncheon.

### House Accessibility for 990 Summit Avenue

- First-floor is wheelchair accessible.
- Two handicapped parking spots located behind house with entrance ramp available
- Complimentary valet parking at regular meetings

### Parking Regulations:

- Stay 20 feet from a crosswalk and 5 feet from a driveway.
- Stay 10 feet from the STOP signs.
- Do not park in front of the Governor's Mansion. The street in front of the wrought iron fence is off-limits.

## FROM THE PRESIDENT



We began an energy-filled fall season topped with great weather, a full house for a fabulous luncheon, and a substantial waiting list. The reservations were filled well before the Friday deadline.

Our camera crew was on hand to record the opening day as well as to take new pictures for those not in our photo directory or for those who wanted to try for a different picture.

Since our Prospective Member Event (PME), we have welcomed 39 new members. We continue to add a few more at each meeting. We love the energy and vitality these new members add to our mission of empowering girls and women in our world and promoting equity for all.

We are still looking for a chair to coordinate the Book Sale activities. We have a faithful crew that sorts, prices, and maintains our book sales area. We especially need a chair to coordinate the activities of the Holiday Sale and Spring Book Sale. If you love books and are looking for a place to volunteer, please consider this opportunity.

The Cologne Leos Club donated three Lins Hybrid Peonies for our yard. We added three more for a total of six plants. Our member Betty Lins requested them on our behalf, and they chose to donate these beautiful plants as a way to contribute to our mission.



Thank you Betty and the Cologne Leos Club! We look forward to seeing the flowers on these new plants next spring.

*We are looking forward to seeing you at our great season of programs,*

*Carol Oeltjenbruns,*  
 952-890-4025 • oeltjenbruns@comcast.net

# CALENDAR-AT-A-GLANCE

## NOVEMBER-DECEMBER 2015 — JANUARY 2016

- November 2 FIRST MONDAY . . . . .8  
10:00 a.m. Executive Board Meeting
- November 3 FIRST TUESDAY . . . . . 8-9  
10:15 a.m. New Member Coffee and Chat  
10:45 a.m. Branch Announcements The Walker Art Center - 75 Years  
12:00 p.m. Luncheon  
1:00 p.m. Karen Organization of Minnesota
- November 4 FIRST WEDNESDAY . . . . .9  
10:15 a.m. The Museum of Russian Art Tour
- November 6 FIRST FRIDAY . . . . .10  
5:00 p.m.-7:00 p.m. Wine, Chocolate & the Arts
- November 7 SECOND SATURDAY . . . . .10  
11:15 a.m. Weisman Art Museum Tour
- November 10 SECOND TUESDAY . . . . .11  
10:30 a.m. Branch Business Meeting  
10:45 a.m. Branch Announcements Midwest Children's Resource Center  
12:00 p.m. Luncheon  
1:00 p.m. The Effects of the Affordable Care Act on Women
- November 17 THIRD TUESDAY . . . . . 12-13  
9:45 a.m. Great Decisions  
10:00 a.m. Book Discussion in the Library  
10:45 a.m. Branch Announcements Current Relationship with Russia  
12:00 p.m. Luncheon  
1:00 p.m. Great Decisions/Special Interests  
1:00 p.m. Joy Davis' Literature Group
- November 18 THIRD WEDNESDAY . . . . .14  
5:30 p.m. Social Hour  
6:00 p.m. Dinner  
7:00 p.m. The Rash Report



- December 1 FIRST TUESDAY . . . . . 16-17  
10:15 a.m. New Member Coffee and Chat  
10:45 a.m. Branch Announcements Ujamaa Place  
12:00 p.m. Luncheon  
1:00 p.m. From Chile to Saint Paul: My Journey for Equity
- December 7 FIRST MONDAY . . . . .17  
10:00 a.m. Executive Board Meeting
- December 8 SECOND TUESDAY . . . . . 18-19  
10:00 a.m. Holiday Party Brunch  
5:00 p.m. Holiday Party Dinner
- December 16 THIRD WEDNESDAY . . . . . 20-21  
12:30 p.m. Minneapolis Institute of Art Tour
- There are no programs or meetings until January 5, 2016*
- January 5 FIRST TUESDAY . . . . . 20-21  
10:15 a.m. New Member Coffee and Chat  
10:45 a.m. Branch Announcements Random Acts of Blindness  
12:00 p.m. Luncheon  
1:00 p.m. Songs Sung by Linh Kauffman
- January 12 SECOND TUESDAY . . . . .22  
10:30 a.m. Branch Business Meeting  
10:45 a.m. Branch Announcements Women Changing the World  
12:00 p.m. Luncheon  
1:00 p.m. Beacon House
- January 19 THIRD TUESDAY . . . . . 24-25  
9:45 a.m. Great Decisions  
10:00 a.m. Book Discussion in the Library  
10:45 a.m. Branch Announcements Women Collaborating for Peace  
12:00 p.m. Luncheon  
1:00 p.m. Great Decisions/Special Interest  
1:00 p.m. Joy Davis' Literature Group
- January 26 FOURTH TUESDAY . . . . .26  
9:30 a.m. Mystery Hour in the Gold Room  
10:45 a.m. Branch Announcements Training Smart Living Strong  
12:00 p.m. Luncheon  
1:00 p.m. Living the Dream: France!

## MEMBERSHIP NEWS

Friends introducing friends---now there's a way to grow!

In 2015 AAUW-St. Paul expanded to more than 400 members on a mission-- advancing opportunities for women and girls. When you see someone with **2015** on her nametag, I hope you will take a moment to say "Hello" to one of our newest members. There are more chances than ever to put a smile on someone's face!

We know it can take a little time to learn everything our Branch has to offer -- understanding the program format, learning about special interest groups, reading the *990*, checking the website, making lunch reservations, or just finding all the restrooms!

So first of all, if you're puzzled, you can ask anyone for help. There is also special **New Member Seating** at lunch with someone from the Membership Committee, and once a month on the first Tuesday, a **New Member Chat** at 10:00 precedes the morning program. Just come to the front of the great hall. Of course, you can also direct your questions to the Membership contacts below.

Welcome aboard to all new members in September!

- |  |                    |  |
|--|--------------------|--|
| - Dorothea Anderson  | - Julie Hanson     | - Cathey Norman                            |
| - Jeri Anderson  | - Margo Hinke      | - Jackie Ogren                             |
| - Patricia Anderson<br>( <i>Dual-St. Croix</i> )<br>Honorary<br>50-Year Member | - Jeanne Jacobson  | - Leslie Plauda                            |
| - Lisa Baker   | - Toni Jones       | - Margo Riskedahl                          |
| - Mollie Bartscher   | - Linda Kelly      | - Susan Robinette                          |
| - Dena Bohn  | - Susan Kelnberger | - Karen Slovek                             |
| - Judie Cooper   | - Karen Knowlan    | - Janis Stoven<br>( <i>Dual-Hastings</i> ) |
| - Kathleen Cooper  | - André Leavitt    | - Elaine Sutton                            |
| - Beverly Dailey   | - Karen Lee        | - Leslie Sworsky                           |
| - Susan Davis  | - Mary Leone       | - Claire ten Bense                         |
| - Sharon Fitzgerald  | - Linda Lilja      | - Barbara Thompson                         |
| - Colleen Gallatin   | - Andrea McCue     | - Lynn Vara                                |
|  | - Kathy Mullarky   | - Theresa Wanta                            |
|  | - Jane Murphy      |  |

### Membership Contacts:

#### Membership Committee Co-Vice Presidents:

membership@aauwstpaul.org

Sandy Crum (crumsandy@gmail.com, 952-888-2114)

Peggy Hall (margarethall3@msn.com, 651-647-0806)

#### Membership Treasurer: pay dues/submit application:

Cheryl Brown, Membership Treasurer (find the Membership mailbox in the AAUW office or contact cherylbrown2010@gmail.com, 858-444-5530)

#### Prospective new members/information and application:

Carole Pesek ([carottee@aol.com](mailto:carottee@aol.com), 651-341-3453)

*Cheryl Brown*, Membership Treasurer

## The Museum of Russian Art: "Faces of War: Russia in World War I (1914-18)"

Wednesday, November 4, at 10:15 a.m.



Join us on a docent-led tour of the multimedia exhibition at The Museum of Russian Art called "Faces of War: Russia in World War I." Items are from collections of Russian archives and museums and from collections in seven other countries. (Go to TMORA's interesting and easy-to-use website-[www.tmora.org](http://www.tmora.org)-for more information.)

The Museum is also showing "Russian Samovars." This is a private collection including, for example, a silver Faberge samovar made for Grand Duke Michael. (Did you know there is a philanthropic organization called "Russian Nobility Association in America"? Look it up!)

The tour will start promptly at 10:15 a.m.; the Museum opens at 10:00 a.m. TMORA is located at 5500 Stevens Avenue South, Minneapolis, on the corner of Highway 35W and Diamond Lake Road. Free parking is directly across the street in a church lot. Admission is \$7 (free to members). There is an exquisite gift shop called Izba, so be ready to look and yearn!

Julia Lyon 651-702-1367

[juliabl@comcast.net](mailto:juliabl@comcast.net)

## CALENDAR DETAILS

### November 2, 2015 FIRST MONDAY

**10:00 a.m. Executive Board Meeting**

### November 3, 2015 FIRST TUESDAY

**10:15 a.m. New Member Coffee and Chat**

Ask your questions and learn about AAUW St. Paul with other new members and a member of the Membership Committee. We gather for coffee and conversation in a corner of the Great Hall.

**10:45 a.m. Branch Announcements  
The Walker Art Center-  
75 Years  
Rivel Greenberg**



This year, 2015, The Walker Art Center celebrates the 75th anniversary of its founding as a public art center dedicated to presenting the art of our time.

Dance, music, film, photography, and performance art, as well as collections of two- and three-dimensional art, are presented in an unending array of programs each year.

The AAUW will learn about these various curatorial departments, as well as about Walker history. In addition, a guided tour will be arranged later in November.

The presenter, Rivel Greenberg, has degrees in Journalism and Humanities from the University of Minnesota.

Ms. Rivel Greenberg has been a tour guide at the Walker Art Center since 1983.



*Margareta Beyer, Cultural Arts Committee*

**12:00 p.m. LUNCHEON**

**1:00 p.m. The Karen Organization of Minnesota  
Eh Tha Khu**

Eh Tha Khu will share the struggles of the Karen people and their success in St. Paul. Eh Tha Khu will share the history of the Karen people and their settlement in Minnesota and will tell us his story of coming to the United States and finally setting in Minnesota. The Karen people are an ethnic minority from Myanmar, a military state the Karen people still call Burma. St. Paul has the largest growing population of Karen people in the country. Eh Tha Khu serves as the Program Manager for Youth and Social Services for the Karen Organization of Minnesota.



*Ellie Niederkorn, Diversity Committee*



**Karen Organization of Minnesota**

မိနိုင်းထွားကရင်အမျိုးသားအစည်းအရုံး  
ဖွဲ့ကုသွဲအဖွဲ့အစည်းထဲ ကညီကရုမံနိုနိုထီထီ  
ချီကရုမာမနိုထီထီ

### November 4, 2015 FIRST WEDNESDAY

**10:15 a.m. The Museum of Russian Art:  
“Faces of War: Russia  
in World War I (1914-18)”**

*See page 7 for more details.*

## **November 6, 2015 FIRST FRIDAY**

### **Wine, Chocolate & the Arts**



**5:00-7:00 p.m.**  
**At Spangler and de Stefano, PLLP**  
**located at**  
**962 Saint Clair Avenue, St. Paul.**

[www.aauwstpaul.org](http://www.aauwstpaul.org)

**MINIMUM DONATION: \$100.00**

Evon M. Spangler's photographs that she has taken all over the world will be available for viewing and purchase during this event with 100 percent of the proceeds benefitting the AAUW Scholarship Trust. Checks made out to St. Paul College Club, Inc., AAUW Scholarship Trust with "Art Fundraiser" in the memo section.

Checks may be sent to: Scholarship Trust, 990 Summit Avenue, St. Paul, MN 55105.

## **WEISMAN ART MUSEUM TOUR**

**Saturday, November 7, 11:15 a.m.**  
 (Weekend hours are 11 a.m. to 5 p.m.)

We will view two special exhibits. "Black and White" relief prints from the WAM collection link Minnesota Swedish-Lutheran heritage, the University of Minnesota's art faculty, and the history of apartheid in South Africa. This is a provocative show.



"The Human Touch: Selections from the RBC Wealth Collection" is a beautiful and thought-provoking contemporary art exhibition celebrating people and diversity. A wide variety of media is represented.

To cover the \$30 fee the museum charges for private tours I will collect \$2-\$3 per person at the start of the tour. Parking for a fee is usually available in the ramp below the museum (entrance on East River Road) or in the East River Road Ramp near the hospital complex. Guests are welcome. The sign-up sheet will be available November 3, or call 651-483-3580 or email [skaggsjmj@comcast.net](mailto:skaggsjmj@comcast.net)

*Mary Jo Skaggs, Weisman Tour Guide*

## **November 10, 2015 SECOND TUESDAY**

**10:00 a.m. Branch Business Meeting**

**10:45 a.m. Branch Announcements**  
**Sexual and Physical Abuse**  
**of Children and Teens**

Dr. Carolyn Leavitt has done extensive training in both sexual and physical abuse of children and teens. She will share with us her vast knowledge in this critical area.



Dr. Leavitt is a Professor of Pediatrics at the University of Minnesota. Dr. Leavitt has recently retired from her Resource Center of Children's Hospitals and Clinics of Minnesota, but she continues her work in serving on various boards and committees.

*Ellie Niederkorn, Program Committee*

**12:00 p.m. LUNCHEON**

**1:00 p.m. The Effects of the Affordable**  
**Care Act on Women**  
**Dr. Steven Miles**



The Affordable Care Act has greatly lowered the number of persons without health care insurance in the United States. Women, however, encounter a different health care system.

Dr. Steven Miles is a Professor of Medicine and Maas Family Chair of Bioethics at the University of Minnesota Medical School in Minneapolis. He is an Affiliate Faculty of the University of Minnesota Law School's Concentration in Health Law and Bioethics. He is board certified in Internal Medicine and teaches at the University of Minnesota.

*Mary Crampton, Public Policy Committee*



## **November 17, 2015 THIRD TUESDAY**

### **9:45 a.m. Great Decisions Brazil's Metamorphosis**



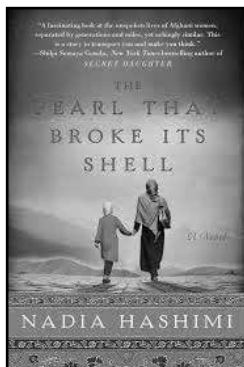
After a century of close Pan-American cooperation with the U.S. in peace and war, this has given way to an “independent” Brazilian foreign policy that has chosen to align

Brazil's powerful commercial expansion toward BRICS (Brazil, Russia, India, China, and South Africa) partners. Driven by ideological advocates of leftist nationalism in its foreign policy (as evidenced by China displacing the U.S. as Brazil's largest trading partner), how will this play out?

*Mary Schrankler, Great Decisions*

### **10:00 a.m. Book Discussion in the Library *The Pearl That Broke Its Shell* A novel by Nadia Hashimi**

Kabul, 2007. The Taliban rules the streets. With a drug-addicted father and no brothers, Rahima and her sisters can rarely leave the house. Their hope lies in the ancient Afghan custom of bacha posh, which allows young Rahima to dress and be treated as a son until she is of marriageable age.



Crisscrossing in time, this book interweaves the stories of two remarkable women who are separated by a century but share the same courage and dreams.

*Marion Soman, Leader*

### **10:45 a.m. Branch Announcements Current Relationship with Russia Todd Lefko**

Mr. Lefko will address the current relationship of the United States with Russia as we examine how we grew up with the Cold War. We will discuss how a new Cold War has developed, what Putin seeks in the resurgence of a Russian Empire, and how the world can deal with a Russia which plays by their own rules.

Mr. Lefko is the President of the International Business Development Company, with homes in Minnesota and Moscow, Russia. He has an MA in Public Administration. Mr. Lefko currently works with Tomsk State University and the Russian University for the Humanities establishing relationships with American universities.



*Jill Ehlen and JoAnn Trygestad,  
International Issues Committee*

- 12:00 p.m. Luncheon**
- 1:00 p.m. Great Decisions/  
Special Interests  
Brazil's Metamorphosis  
(repetition of 9:45 program)**
- 1:00 p.m. Joy Davis' Literature Group  
in the Library  
*The Mother's Recompense*  
by Edith Wharton**



Opening on the French Riviera among a motley community of American expatriates, *The Mother's Recompense* tells the story of Kate and her reluctant return to New York society after being exiled years before for abandoning her husband and infant daughter.



## November 18, 2015 THIRD WEDNESDAY

### EVENING PROGRAM

5:30 p.m. Social Time

6:00 p.m. Dinner

7:00 p.m. Program



### *The Rash Report*

John Rash is a Star Tribune editorial writer and columnist. The Rash Report can be found on the radio at 8:20 a.m. on Fridays on WCCO. Mr. Rash is the eyes and ears of the inside world of factual events in the news. From his family's recent vacation in India to his work with the Minnesota International Center and the Great Decision Program, Mr. Rash's scope spans from Minnesota to the world. Be prepared for a give and take on whatever pops up in the news.

*Mary Schrankler and Alice Faribault,  
Evening Programs*

## November 24, 2015 FOURTH TUESDAY

*No meetings or programs.*



## Where Are Your AAUW State Archives?



AAUW's archives consist mainly of the national-level records of AAUW. However, AAUW states and branches also have rich archival collections that have been preserved and made available for research. Nearly all AAUW states have given historical societies or university libraries access to the local AAUW archival collections. Through these arrangements, the archival records are being processed, cataloged, and made available for public research.

That also means that you have public access to your local AAUW history! The Minnesota Historical Society in St. Paul is the location of our archival collection.

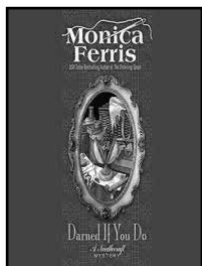


345 W Kellogg Blvd, St Paul, MN  
651-259-3000

## **December 1, 2015 FIRST TUESDAY**

**9:30 a.m.**

### **Mystery Hour in the Gold Room *Darned If You Do: A Needlecraft Mystery* by Monica Ferris**



An eccentric and avid “collector” is asleep in his Excelsior Minnesota home when an ancient elm crashes through his roof during a thunderstorm. His cousin arrives to clean up the damaged house. He suddenly dies and his cousin is suspected of murder.

*Carolyn Oliver, Leader*

### **10:15 a.m. New Member Coffee and Chat**

Ask your questions and learn about AAUW St. Paul with other new members and a member of the Membership Committee. We gather for coffee and conversation in a corner of the Great Hall.

### **10:45 a.m. Ujamaa Place John Harrington and Otis Zanders**

Ujamaa Place is an organization focused on young African American men in Saint Paul (primarily between the ages of 18 and 30), many of whom suffer multiple barriers to becoming stable, productive members of the community. These barriers include being under-educated, unemployed and/or unemployable, affiliated with gangs, a criminal history, homelessness, drug use, and a general marginalization by greater society.



Ujamaa Place board chair, John Harrington, head of Metro Transit Police, and CEO Otis Zanders will more fully explain the program and be joined by an Ujamaa man who will talk about his personal experience.

*Jane Tschida, Education Committee*

### **12:00 p.m. LUNCHEON**

### **1:00 p.m. From Chile to Saint Paul: My Journey for Equity Valeria S. Silva**



Saint Paul Public Schools Superintendent Valeria S. Silva shares how her experiences growing up in Chile and her move to the United States has impacted her fight for educational equity.

Ms. Silva is the only Latina superintendent of a large urban school district in the United States. Superintendent Silva is a native of Chile and learned English as an adult, giving her a unique perspective.

As a leader in innovation, Silva is spearheading the transformation of education by creating a framework for racial equity, pushing for the migration from textbooks to digital content, and developing cutting-edge educational environments to meet the needs of today’s learners.

Ms. Silva served as The Council of the Great City Schools board chair and currently serves on the executive board of the School Superintendents Association, and as a board member of the Association of Latino Administrators and Superintendents (ALAS), which is setting the stage for other Latino superintendents of the future.

Superintendent Silva holds B.A. degrees from St. Cloud State University and Pontificia University of Chile and M.A. and ED.S. degrees from the University of Minnesota. She is also a 2009 graduate of the prestigious Broad Superintendent’s Academy.

*Deborah Wright, Women’s Issues Committee*

## **December 7 FIRST MONDAY**

### **10:00 a.m. Executive Board Meeting**



## Special holiday invitation for you!

Tuesday, December 8

*Come for*

Social Time and Book Sale

Brunch at 10:00 a.m. (members only please)

OR

Social Time and Book Sale

Dinner at 5:00 p.m. (guests are welcome)

**Program for both brunch and dinner:**

### *A Baroque Holiday Cornucopia*



Baroque violinist **Margaret Humphrey** maintains a vibrant freelance schedule, performing with orchestras and chamber ensembles around the country. Early music being her special focus, she tours as a founding member of Twin Cities-based baroque quartet *Belladonna*, and as a guest of **Tempesta di Mare**, and *The Kingsbury Ensemble*.

**Phillip Rukavina** performs nationally and internationally as a lute and vihuela soloist, ensemble performer, and continuo lutenist. He is a founding member of the *Venere Lute Quartet*, the *Chambure Vihuela Quartet*, and the *Terzetti Lute Duo*. He teaches lute out of his home in St. Paul.



**Cléa Galhano** is an internationally renowned recorder player. Ms. Galhano is an accomplished performer of early, contemporary, and Brazilian music. Galhano has performed in the United States, Canada, South America and Europe as a chamber musician, collaborating with recorder player Marion Verbruggen, *Belladonna*, *Lanzelotte/Galhano Duo*, and the *Galhano/ Montgomery Duo* and *Jacques Ogg*. As a featured soloist, Galhano has worked with the *Saint Paul Chamber Orchestra*. Ms. Galhano regularly conducts workshops across the United States and Brazil.



**Cost for the brunch and entertainment \$25**

OR

**Dinner and entertainment \$30**

**Reservations must be prepaid to be confirmed for the event.**

**Price at the door (if there is space):**

**Brunch \$30 and Dinner \$35**

Make reservations at  
[reservations@stpaulcollegeclub.com](mailto:reservations@stpaulcollegeclub.com).

If unable to email, call 651-2275885



**Don't miss this wonderful holiday event!**

**\*\*\*There will not be any programs or meetings until Monday, January 5, 2016.**

## **December 16, 2015 THIRD WEDNESDAY**

### **12:30 p.m. Minneapolis Institute of Art Tour**

*Delacroix's Influence: The Rise of Modern Art from  
Cézanne to van Gogh*

*Tickets are \$10 with a 15-person limit*

*Meet in the museum lobby at noon.*

*Joanne Wang, Tour Director*

## **January 5, 2016 FIRST TUESDAY**

### **10:15 a.m. New Member Coffee and Chat**

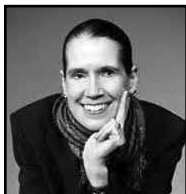
Ask your questions and learn about AAUW St. Paul with other new members and a member of the Membership Committee. We gather for coffee and conversation in a corner of the Great Hall.

### **10:45 a.m. Branch Announcements**

***What I Thought I Saw:***

***Random Acts of  
Blindness***

**Written and performed  
by Leslye Orr**



This one-woman show chronicles the hilarious one-eyed adventures of playwright and performer Leslye Orr, and her off-kilter view of life in a 3-D world. In this autobiographical storytelling piece, Ms. Orr, who is legally blind, relives her childhood escapades, groovin' in high school in the 70s, doing crazy sound effects, and taking a big leap of faith as a wannabe performer in Minneapolis. The play premiered at the Illusion Theater's Fresh Ink in 2013. Since then, Leslye has performed for Disability Conferences, the Minnesota Fringe Festival, and at various other venues in the Midwest.

She is with Upstream Arts in Minneapolis, was a speaker/specialist appointed by the U.S. Department of State, and toured her show Hand in Hand internationally through American Embassies. She is a sound-effects enthusiast, featured on *Prairie Home Companion*. Born legally blind,

Ms. Orr upholds the possibilities of disabilities and is the author/illustrator of the children's picture book *The People on the Corner*. She will sell signed copies after her presentation.

Ms. Orr and her husband own Dreamland Arts, a 40 - seat theater in St. Paul. [www.dreamlandarts.com](http://www.dreamlandarts.com)

*Nancy Scanlon,  
Program Development Committee*

### **12:00 p.m. LUNCHEON**

### **1:00 p.m. Linh Kauffman, Soprano**



Praised as "vocally and dramatically powerful" by the *Washington Post* and "radiant" by the *Saint Paul Pioneer Press*, American soprano Linh Kauffman enjoys an active career in opera, oratorio, new music, and recital. Her 2014-15 performances included Mahler Symphony No. 2 with Osmo Vänskä and the Minnesota Orchestra, Mahler Symphony No. 4 with the Metropolitan Symphony, Festival Música Antigua Panamá, Euridice in Gluck's *Orfeo* for the Twin Cities Early Music Festival, the title role in Handel's *Esther* with Lyra Baroque Orchestra, and Festival Musique en l'Île in Paris.

Ms. Kauffman made her Latin American debut as Melia in Mozart's *Apollo et Hyacinthus* at the Teatro Nacional de Panamá. Other appearances include the title role in *Pocahontas: Woman of Two Worlds* for Duluth Festival Opera, *Acis and Galatea* with Berkeley Opera, and *West Side Story* with Sierra Repertory Theatre.

A native of Connecticut, Ms. Kauffman earned music degrees from Carnegie Mellon University, the University of Maryland, and the University of Minnesota. She further studied at the Weill Institute at Carnegie Hall and the Salzburg Mozarteum and was the winner of the 2007 Voices of Vienna Competition. She is based in Minneapolis and is married to tenor and conductor Gary Rushman.

*Linda Trouten, Cultural Arts Committee*

## **January 12, 2016 SECOND TUESDAY**

### **10:45 a.m. Branch Announcements Women Changing the World Carol DeFrancisco**

Ms. DeFrancisco is speaking on using our feminine superpower to enhance communication, communicate with the opposite sex, and uplift the culture.

Ms. DeFrancisco is a graduate from Western Illinois University and she is a pioneer in transformational process, teacher, consultant, and personal coach. Her career has focused on empowering women with an emphasis on women’s unique approaches to business and communication. She has owned and operated a number of Healing and Complimentary Clinics in Minneapolis, Chicago, Bozeman, and Los Angeles where she had the first multi-disciplinary Clinic in Southern California.

Ms. DeFrancisco is excited about teaching and publishing her upcoming book.

### **12:00 p.m. LUNCHEON**

### **1:00 p.m. Beacon Interfaith Housing Collaborative Lee Blons**

Beacon is a collaborative of over 70 congregations committed to ending homelessness through shelter, advocacy, and housing. Beacon has developed or preserved nearly 500 units of affordable, supportive housing located in 15 properties across the metro area. Executive Director, Lee Blons, will share how Beacon is working to end homelessness and reach their goal of providing 1,000 homes by 2020. Ms. Blons has over 23 years of experience in non-profit management of housing organization.



She holds a BA in political science from Carleton College, Northfield where she was a Sloan Fellow in Science, Technology and Public Policy. In June 2012, Ms. Blons received a Distinguished Achievement Award from the Carleton Alumni Association in recognition of her career creating high-quality housing for low-income people and engaging others in the movement to end homelessness.

*Donna Koslowski, Public Policy Committee*

## **UNIVERSITY CLUB**

The University Club has offered members of St. Paul Branch AAUW the opportunity to use their facilities. As an AAUW member, you may use their dining facilities and participate in their non-athletic programs and events.

The University Club of Saint Paul’s Summit Avenue Clubhouse offers members beautiful indoor dining rooms and outdoor dining options in the summer months.

During the summer, the club opens its outdoor deck, adjacent Varsity Grill, and poolside dining - all with spectacular views of the Mississippi river valley and the Downtown Saint Paul skyline.



When making a reservation mention that you are an AAUW member!

The University Club is located at  
420 Summit Avenue  
St. Paul, Minnesota  
651-222-1751

Reservations are always appreciated.



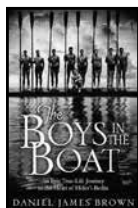
## **January 19, 2016 THIRD TUESDAY**

### **9:45 a.m. Great Decisions Modern Day Slavery**

Human trafficking is a lucrative and fast-growing criminal industry around the world. What needs to be done to curb these activities? Will the U.S. play a special role in finding a solution?

*Mary Schrankler, Great Decisions*

### **10:00 a.m. Book Discussion in the Library**



*The Boys in the Boat* celebrates the 1936 United States men's Olympic eight-oar rowing team—nine working class boys who stormed the rowing world, transformed the sport, and galvanized the attention of millions of Americans. Written by Daniel James Brown, *The Boys in the Boat* is an

outstanding true story about the University of Washington rowing team winning the 1936 Olympic Gold Medal in Berlin. It is a story of resiliency, perseverance, forgiveness, and teamwork among other attributes. The book's principal character is Joe Rantz, who was interviewed by Mr. Brown many times prior to Rantz's death. Joe was abandoned as a child, but nonetheless he was a hard worker with a kind, gentle spirit. It was a time of great economic hardship for many people and particularly for Joe and his family. Also the world situation and the Olympic games were greatly affected by the rise of the Nazi Party and the outbreak of WWII. This is a book not to be missed!

*Julie Ditzler, Leader*

### **10:45 a.m. Branch Announcements Women Collaborating f or Peace Sandy Pappas. Minnesota State Senator**

Senator Pappas has long been known as an advocate for education for all in Minnesota, and also for the rights of women and justice for all. She is presently vice president

of the Women in Legislative Lobby as well as other organizations representing women.

Senator Pappas has recently been working with Shinkai Karokhail of Afghanistan, exploring ways to involve more women in Afghanistan in politics and decision-making processes. She will talk to us about how she became involved in this particular venture and update us on the progress being made in Afghanistan.



*Lois Wintersteen, International Issues Committee*

### **12:00 p.m. Luncheon**

### **1:00 p.m. Great Decisions/ Special Interests Modern Day Slavery (repetition of 9:45 program)**

### **1:00 p.m. Joy Davis' Literature Group in the Library Continuation of The Mother's Recompense (Wharton)**



Edith Wharton (1862-1937) was not content to be merely a society matron and hostess. From childhood she showed that she was exceptionally bright and creative. Even before she could read, she made up stories; and as an adolescent wrote poetry and fiction and a novella *Fast and Loose*. She was very precocious for a writer of fifteen. As an adult she found writing difficult and did not publish her first book of fiction until she was 36. The conflict she felt between the accepted role of a society matron and that of a professional writer caused her much anxiety and no doubt contributed to the depression for which she was treated in the 1890s. A tonic for her depression was her yearly escape to France and Italy, which inspired her to write about art, architecture, and gardens.

*Joy Davis, Leader*



## January 26, 2016 FOURTH TUESDAY

### 9:30 a.m. **Mystery Hour in the Gold Room** ***The Reckoning* by Rennie Airth**

Could events in France during the Great War 30 years earlier still be resulting in murder in England in 1947, when it is struggling to recover from WWII? Might additional innocent people be executed by the cunning killer? Despite a skeptical police force, the clues eventually lead to a miscarriage of justice that is finally resolved.

*Carolyn Oliver, Leader*

### 10:45 a.m. **Branch Announcements** **Training Smart, Living Strong** **Amy Hodge**



Every day Amy Hodge motivates roomfuls of people to get in motion for better fitness. She is a firm believer in exercise for weight loss and good health; but more importantly, she lives the connection between physical and mental toughness in life. A positive, energetic trainer, her focus is strength's higher purpose. Ms. Hodge will explain through her own experiences how we can make a deliberate commitment to fitness and a life well lived.

*Nona Mason, Program Development Committee*

### 12:00 p.m. **LUNCHEON**

### 1:00 p.m. **Living the Dream: France!** **Carol Gardyne, Silk Painter**

Minnesota-born artist Carol Gardyne joins us from her home studio in the French countryside where she teaches silk painting and introduces students to the pleasures of French culture: food, wine, cheese, small town markets, history, and the arts. Come and discover the fascinating art of painting on silk and Carol Gardyne's perspectives on living abroad in France. Bring along a favorite scarf and you might learn a new tying trick or two!



Prior to her recent retirement, Carol Gardyne's boutique in San Diego's Little Italy featured her unique silk scarves and distinctive apparel from shopping forays in Paris, New York, and Los Angeles. Her artistry has been represented at juried art shows across the country, including the Uptown Art Fair. For a glimpse of her work: <http://carolgardyne.com/Trip.htm> or <http://www.carolgardyne.com>.

*Cheryl Brown, Cultural Arts Committee*

## PROPERTY/ HOUSE NEWS

### Property Update

After a great summer of hard work, everything is looking great! There were some delays with the driveway, and it will be completed in the spring. The Gold Room has a new look, and the grounds were updated with new plants this summer. Thanks to all committees!

### Planning an event?

When you recommend the St. Paul College Club to friends, neighbors, business associates, and family members, you are helping St. Paul AAUW. It is our business operation. When the College Club (SPCC) does well, we benefit. Business profits have supported many of the renovations we have completed as well as those still in progress. Please share with those you know how the lovely updated, yet historic, exterior and interior of our clubhouse can enhance any event. Let them know of the delicious menu options and the fine service provided by our capable and attentive staff. Please encourage those who are looking for the perfect location for their upcoming special occasion to contact the St. Paul College Club at 651-227- 4477. Our event planners are talented in assisting each customer to create a personalized and memorable event.

### Donating a treasure?

As part of the long-term decorating plan, the Property House Committee will handle all donations to the House such as furniture, lamps, and artwork. The Committee decides whether the donation is suitable or where it should be placed.

Marlys Larsen  
651-483-6949  
[marlar987@aol.com](mailto:marlar987@aol.com)





## BRANCH NEWS

**Reminder: AAUW Branch Meetings are scent free.**

### Member Communication

Our branch communicates with members in many ways, including our own website and two regular written publications.

**Our branch website** is <http://www.aauwstpaul.org>. Check us out! Jan Quist is our Webmaster and you can contact her at [jan@quistnet.com](mailto:jan@quistnet.com)

**The Timely Report** is a monthly newsletter that is emailed and distributed at meetings. It often contains information that was too late to get into the bulletin. If you have information to submit for possible inclusion in the **Timely Report**, contact Carol Sheggeby at 651-454-7448 or [csheggeby@gmail.com](mailto:csheggeby@gmail.com).

**The 990 News** (this bulletin) is published four times a year and is mailed to members. When you have articles and pictures to submit for inclusion, contact **Carol Hanson** at 612.210.6677 or [carolehanson@comcast.net](mailto:carolehanson@comcast.net)

#### **Due Dates for 990 News submissions**

December 30 for the February/March/April issue

March 25 for the May/June/July/August issue.

July 25 for the September/October issue

September 25 for the November/December/January issue

### Computer Access

The computer in the branch office is available for members' use. It is a standard Windows machine that is connected to the Internet, email, printers, etc. The ID name and the password are located on the computer. Public libraries also provide free access to computers.

## BRANCH PERKS

### Bridge Groups

Two bridge groups meet from January through November. One meets at the Branch House, the other in homes. Contact Marlys Larsen, 651-483-6949.

### Gertens Plant Cards

Help support the Scholarship Trust and AAUW Funds and beautify your home and garden by purchasing **Gertens Plant Cards** online. Cards will be mailed directly to you. Eleven percent of your purchase will be returned St. Paul AAUW.



The link is on our branch home page [aauwstpaul.org](http://aauwstpaul.org) under the Current Members tab. Click on Plant Cards and then on the image of the card, and you will be taken to the Gertens order page.

Gertens Plant Cards can be used to purchase plant material at Gertens in Inver Grove Heights all year long. This includes but is not limited to: annuals, houseplants, perennials, shrubs, trees, and poinsettias. The cards will not decrease in value or expire.

### University Club

The University Club, 420 Summit, offers St. Paul AAUW members use of their dining facilities. Just let your server know you are an AAUW member and pay with cash, check or credit card.

Members can also participate in non-athletic activities. Call 651-222-1751 for reservations.

### Entertainment Books

Entertainment Books continue to be sold for \$30. Entertainment Books provide hundreds of up-to-50%-off and 2-for-1 offers from restaurants, cafes, attractions, activities, retailers, dry cleaners, car washes, and hotel accommodation. This fundraiser supports The Branch Scholarship Trust and AAUW Funds. Contact Carol Barry, 651-455-3360, or a member of the Ways and Means Committee.







empowering women since 1881

**American Association of University Women**

The St. Paul Branch

990 Summit Avenue

St. Paul, MN 55105



*Time Sensitive Material*

Non-Profit Org.  
U.S. POSTAGE

**PAID**

TWIN CITIES, MN

Permit No. 820

ADDRESS SERVICE REQUESTED